



RENUUE

ELEVATE YOUR QUALITY OF LIFE





## The Renue Difference

*The level of service and care you deserve*

The *Renue Medical Centre* delivers World-Class Services to make you feel comfortable and relaxed while enjoying a worry-free journey to wellness and a better life.

Compare all that *The Renue Medical Centre* has to offer and book an appointment. Call us now!

### THE RENUE MEDICAL CENTRE

#### State-of-the-art Epigenetics Testing

- ◆ Bringing accountability to regenerative medicine is one of our core values. At *The Renue Medical Centre*, we conclude our protocols and treatments with another round of testing to determine if you are making progress in your wellness journey.

#### VIP Transportation with Mercedes Vans

- ◆ Our *Renue Chauffeur* picks you up from the airport in our Mercedes Benz vans. Our drivers escort you to your hotel and check you in.

### OTHERS

#### Standard Testing

- ◆ Others do not offer such advanced testing and technology.

#### Regular cabs

- ◆ Grab a cab in a strange city where you may not even speak the language.

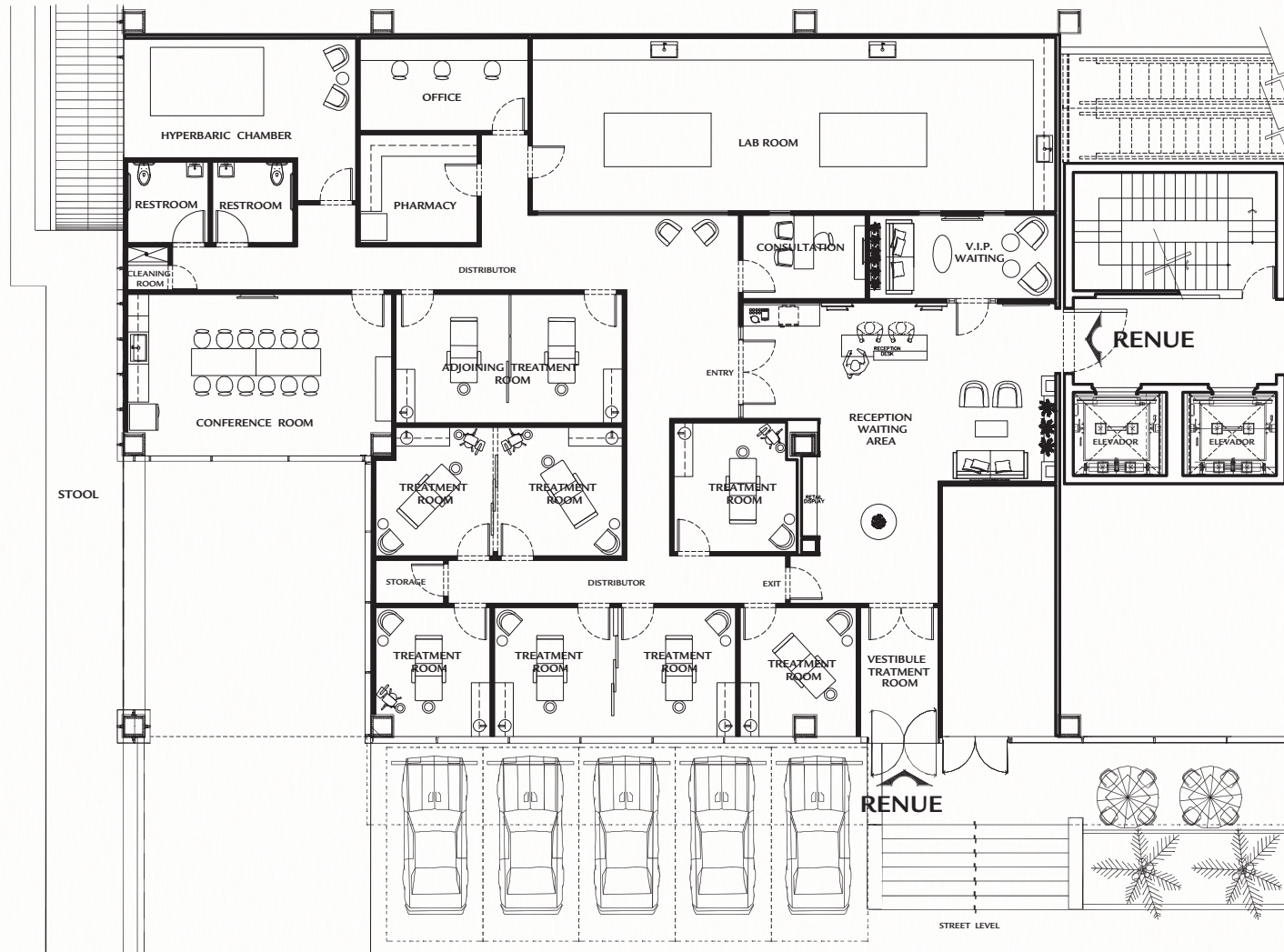


RENUE





## Architectural Plan Of Beauty Clinic







## THE RENUE MEDICAL CENTRE

### In the comfort of your hotel room

- ◆ You don't need to leave your hotel room. Our phlebotomist will knock on your door the morning after your arrival to collect the samples for your lab work.

### No forms to fill, no check-in to do

- ◆ Our driver will pick you up from your hotel and escort you to the VIP Room on the treatment day. There, you'll sit comfortably as our staff checks you in and goes over your itinerary for the day. No forms to fill out; our system is entirely paperless.

## OTHERS

### Waiting room

- ◆ Sit in a waiting room after fasting all night to collect your sample in the clinic room.

### Endless forms and standing inline

- ◆ Check-in by standing in line just to be asked to fill out endless forms on a clipboard balanced on your knees.









## THE RENUE MEDICAL CENTRE

### Epigenetic testing

- ◆ The Patient's journey starts with an *Epigenetic Test* to determine their baseline age on a cellular level. Bringing accountability to regenerative medicine is one of our core values. We end protocols and treatments with the same test to determine if we are making progress. *Epigenetic DNA Testing* is currently the state-of-the-art way to determine telomere length, cellular age and the ark of your aging.

### Hyperbaric Chamber Centre

- ◆ A consensus among stem cell scientists is that *Hyperbaric Chamber Treatments* highly increase stem cell and exosome treatments' efficacy. We have a *Multiplace Hyperbaric Chamber* capable of treating four patients at one time.
- ◆ We have a helipad. On Mexico's west coast, our facilities provide care not only for antiaging, *Stem Cell* activation, and wound care treatments but also for diving accidents.
- ◆ We are the only facility in Mexico that requires an emergency-trained nurse accompanying every group of patients during hyperbaric treatments.

## OTHERS

### Epigenetic Testing

- ◆ Epigenetic what? Never heard of it.

### Portable Hyperbaric Chamber

- ◆ If there is a chamber, it is a home-use portable chamber that can only deliver compressed oxygen at 1.3 ATA; this configuration is far from truly therapeutic protocols.
- ◆ No helipads!
- ◆ No emergency-trained nurse accompanying patients during hyperbaric treatments.

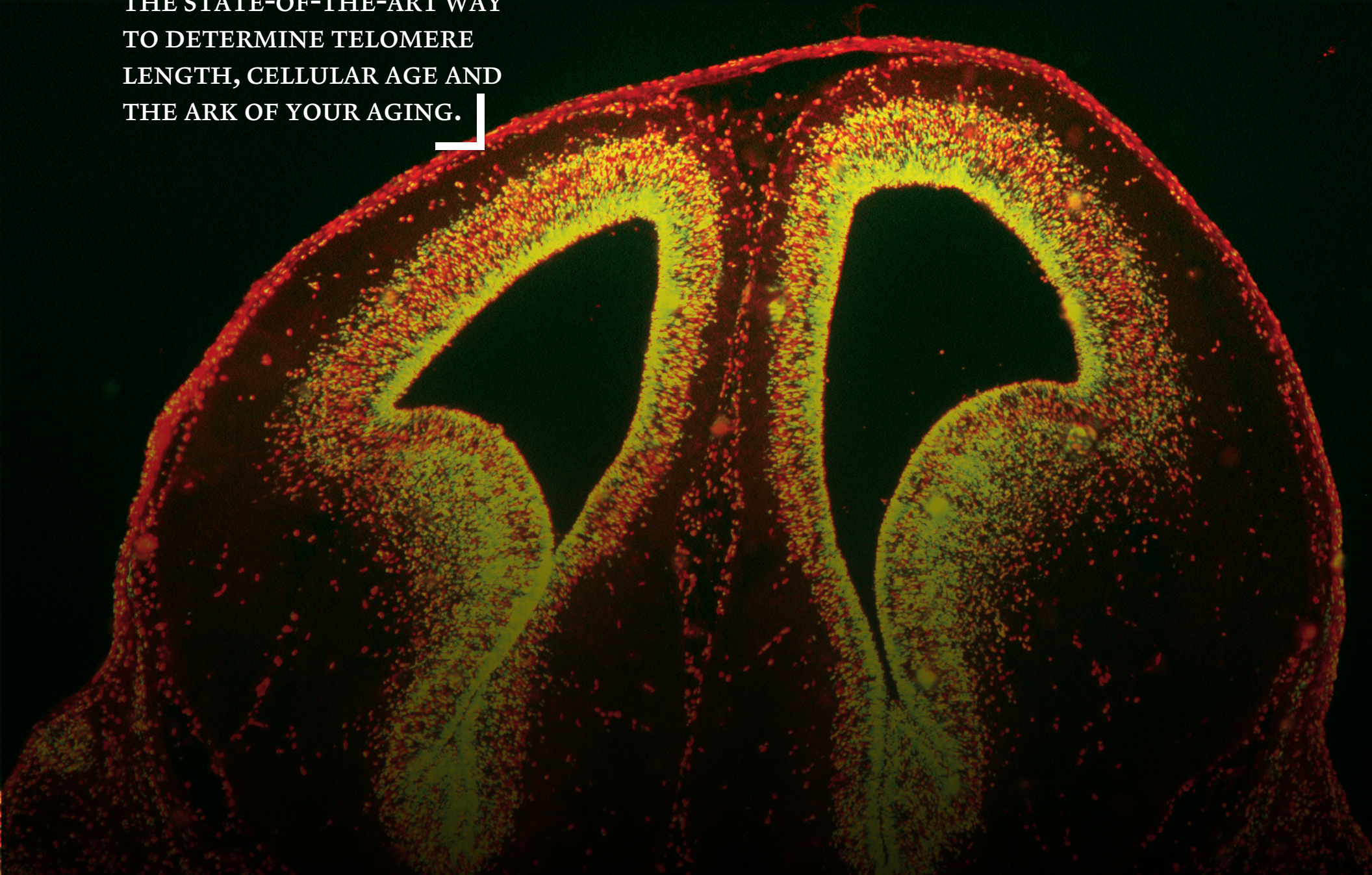


RENUE



EPIGENETIC DNA

TESTING IS CURRENTLY  
THE STATE-OF-THE-ART WAY  
TO DETERMINE TELOMERE  
LENGTH, CELLULAR AGE AND  
THE ARK OF YOUR AGING.





## THE RENUE MEDICAL CENTRE

### The Renue Medical Centre's Class 5 onsite Lab

- ◆ Take a visual tour of the Class 5 laboratory on-site while our qualified professionals prepare your *Stem Cells* from the incubators to the cell counter and then the delivery method. No loss in bioavailability since the cells aren't frozen for transportation.

### Review Renue's Medical Licenses

- ◆ It is part of *The Renue Medical Centre's* standard procedure that you review our regenerative medicine license, harvest, culture and bank license, and minimally invasive surgical procedures license.

### State-of-the-art technology and board-certified surgeons

- ◆ All intra articular *Stem Cell* joint injections are done using the latest state-of-the-art musculoskeletal ultrasound scanners with needle enhancement function performed by a board-certified orthopedic surgeon.

## OTHERS

### Third-party, offsite lab

- ◆ You get shown a copy of a flow cytometry test done a month prior on a batch of cells that you aren't getting and in a language that you don't speak or read. Cells are frozen, transported, and thawed, losing up to 30% bioavailability and posing potential chain of custody issues.

### No licenses for your review

- ◆ Listen to a salesperson explain to you that the third-party lab license also applies to them and that they do not have licenses available for your review.

### General practitioners

- ◆ A general practitioner feels the joint and hopes they get the needle in the right spot and doesn't damage peripheral tissue in the process.



RENUE





A CONSENSUS AMONG  
STEM CELL SCIENTISTS  
IS THAT HYPERBARIC  
CHAMBER TREATMENTS  
HIGHLY INCREASE STEM  
CELL AND EXOSOME  
TREATMENTS' EFFICACY.



## THE RENUE MEDICAL CENTRE

### Exosomes

*A combination of Exosome and Stem Cell Therapy: Stem Cell Therapy* is a successful treatment for the regeneration of cells but combining exosomes can even enhance its efficiency. Exosomes can be 3x more concentrated with growth factors to proliferate cell production compared to adult *Stem Cells*.

In *Autoimmune Diseases*, the body forgets to keep the inter and intracellular communication intact. *Stem Cell Therapy* helps redirect the body pathways and cell mechanisms, but a few external factors can limit its efficiency.

On the other hand, Exosome Therapy can help in supporting the gaps of *Stem Cell Therapy* by:

- ◆ Enhancing cell-to-cell communication
- ◆ Providing additional and more advanced information from the immature or younger cells
- ◆ Providing maximum efficacy because they can cross the blood-brain barrier

Exosome vesicles are easy to administer in the body, anti-inflammatory, and anti-fibrotic. An increase in cell-to-cell communication helps in improved healing and structured or programmed cell growth in the body. That's why researchers suggest the combination of both *Exosomes and Stem Cell Therapy* to treat *Autoimmune Diseases*.


According to research, the combinations of *Stem Cells and Exosomes* greatly enhances the efficacy of the treatment.

## OTHERS

### Competitors:

To our knowledge *Stem Cells* and exosomes are rarely combined together.





STEM CELL THERAPY  
HELPS REDIRECT  
THE BODY PATHWAYS AND  
CELL MECHANISMS, BUT A  
FEW EXTERNAL FACTORS  
CAN LIMIT ITS EFFICIENCY.



## THE RENUE MEDICAL CENTRE

### Renue's Cellular Skin Care Products

- ◆ We have developed our own line of skincare, shampoo, and rejuvenation products. At our state-of-the-art lab, the team of highly qualified scientists developed our own line of products using our *Stem Cell, Exosome, Growth Factors, and Culture Media*.
- ◆ Fighting the aging process involves several aspects; cosmetics, aesthetics, hair restoration, and skin rejuvenation are essential to slowing aging.
- ◆ You will enjoy our line of skin and hair care products specially developed for our patients to continue to benefit from their *Renue Treatments*.

### Renue's Post Treatment

- ◆ We take care of our patients after they finish their treatments. We offer you 30, 60, 90 days as well as 6 months post-treatment care services to check your progress.

## OTHERS

### Generic Skincare Products

Others do not have their own proprietary line of anti-aging skin and hair restoration products.

### No Post Treatment

No post-treatment care or services.







STEM CELL THERAPY IS A  
SUCCESSFUL TREATMENT  
FOR THE REGENERATION  
OF CELLS, BUT COMBINING  
EXOSOMES CAN EVEN  
ENHANCE ITS EFFICIENCY.





# RENUE

ELEVATE YOUR QUALITY OF LIFE

Paseo de los Cocoteros 55 ♦ Fraccionamiento Náutico Turístico ♦ Nuevo Vallarta

Follow us:

[www.renue.healthcare](http://www.renue.healthcare)

 @RenuePV

 @renuepvmc

 @renuepv\_mc

 RENUE Medical Centre